

# CreativeVisions Loan Product Advisor 4.8 System to System XML Export

In order to generate the LPA version 4.8 XML file, go to CreativeVisions form 27075 provided in the forms list.

27075 - LPA 4.8



Loan Product Advisor<sup>SM</sup> Interface

Check XML and Save

Take me to WBB Interchange

XML Export Saved To: C:\Uploads\LPA\

Assigned LPA Key:   
Most Recent Transaction:   
LPA Loan Identifier:

```
<?xml version = "1.0" encoding = "UTF-8"?>  
<!DOCTYPE LOAN APPLICATION SYSTEM  
LOAN APPLICATION MISMOVersionID = "2.4">
```

If not already entered, click on the "XML Export Saved To:" field, to select the directory location where you will be saving the XML file. If needed, first create the desired directory folder on your PC.

XML Export Saved To: C:\Uploads\LPA\

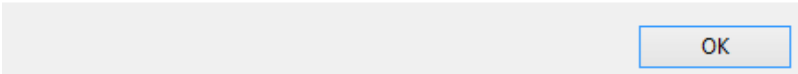
Click the button "Check XML and Save", and CreativeVisions will first validate the XML file for errors and required entries.

Check XML and Save

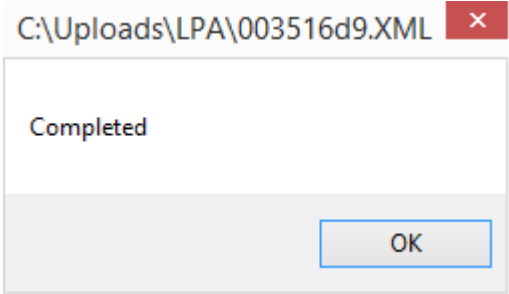
If a required entry is missing or conflicting with other entries, you may be prompted with a Validation Error message providing more details. Correct any errors and re-check and save the XML.

Mismo Upload Validation Error: At least one name is required at this location.

Line: 142  
Col: 34  
".... HMDARaceRefusalIndicator = "N" /> ..."



If the XML validates successfully, you will receive a message indicating the file name and directory location of the saved XML.



With the file location and name noted, click "Take me to WBB Interchange" to proceed uploading the XML to Creative Thinking's Freddie Mac Loan Product Advisor System to System interface.

Take me to WBB Interchange